

**We have recently expanded the business to offer a recycling service. Demolition and building waste materials drawn from the Cotswolds are sorted into soils and rubbles, which are then put through various crushing and screening plants to produce hardcore, soils and inert fill.**

#### Recovered Top Soil

Specially selected soils locally sourced in the north cotswolds are carefully stored in our drying shed. They are then gently screened at 10mm making a fine tilth for use on any landscaping project. Coarser products for use in roadside kerb replacement are available on request.

#### Recovered Products

Our team at Huntsmans don't just crush everything that comes in. We select out items such as kerb stones and old building stone for reuse. Why don't you ring the team or visit the quarry to see what is available.

#### Remac

Huntsmans also take in significant quantities of tarmacadam materials from road reconstruction projects. This material is kept separate from the normal stone and concrete inputs and is screened and then crushed to make a graded product ideal for use as a durable surface on carparks and roadways.

#### Muck Away & Grab Bag Facility

Our state-of-the-art dropside tipping lorry with long-reach crane is ideally suited for the easy removal of inert waste.

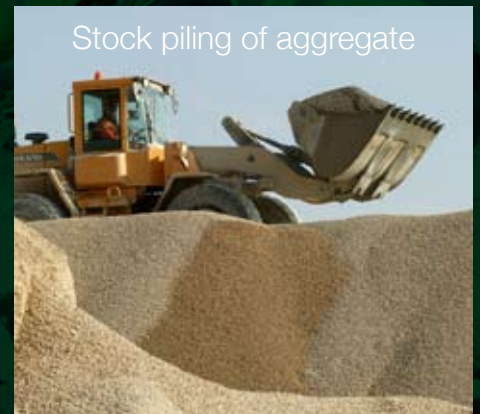
Reclaimed & recycling area



Processing of materials



Stock piling of aggregate



Huntsmans Quarries Ltd  
Buckle Street  
Naunton  
Cheltenham  
Gloucestershire  
GL54 3BA

Tel: 01451 850555  
Fax: 01451 850670  
Email: [sales@huntsmansquarries.co.uk](mailto:sales@huntsmansquarries.co.uk)  
Web: [www.huntsmansquarries.co.uk](http://www.huntsmansquarries.co.uk)